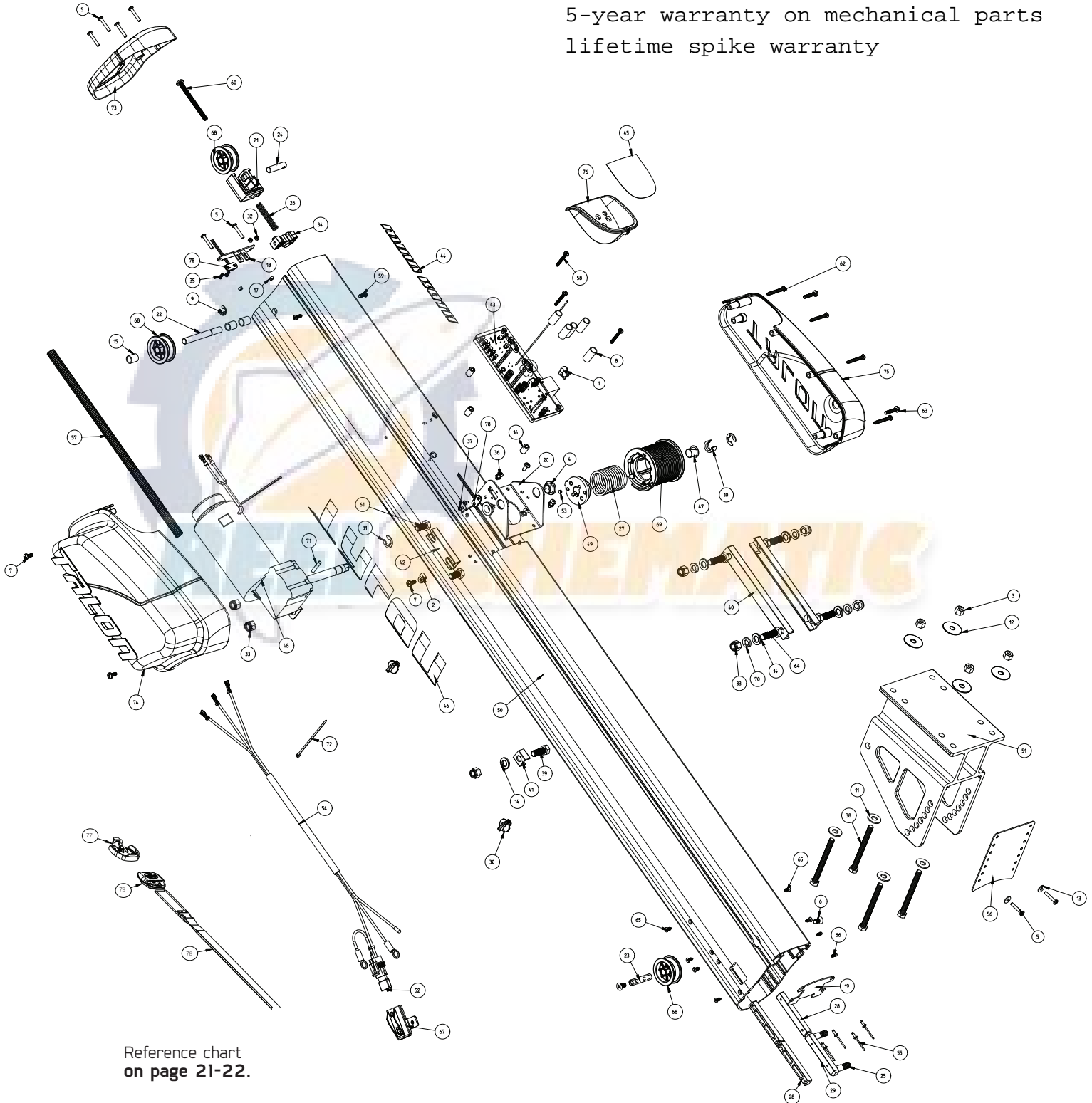


Talon - 10' & 12' Shallow Water Anchor

PARTS LIST

for use with "0" serial numbers

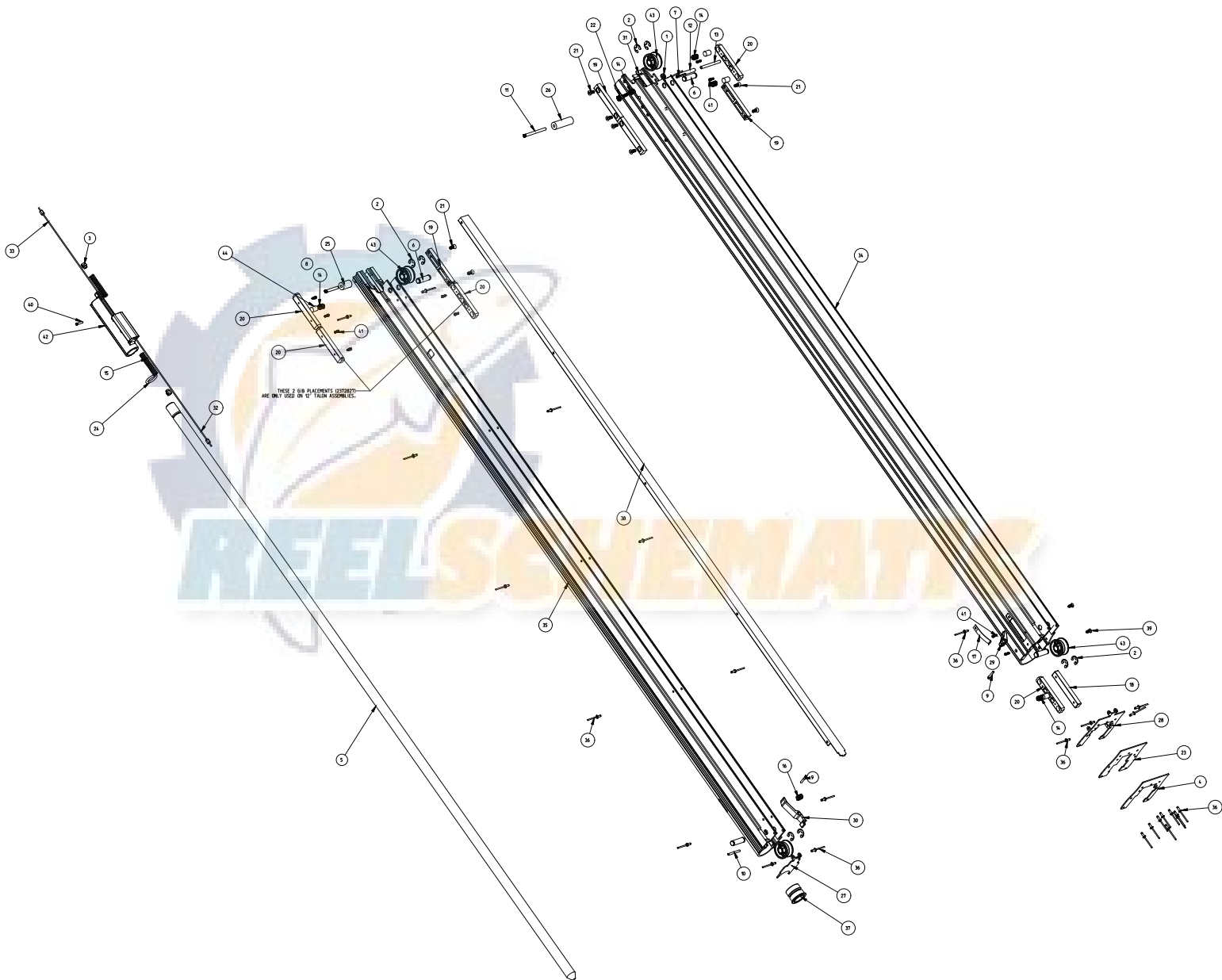
2-year warranty on electrical parts
5-year warranty on mechanical parts
lifetime spike warranty



Reference chart
on page 21-22.

ITEM NUMBER	QUANTITY	PART NUMBER(S)	PART NAME
1	2	2040340	SCOTCHLOK CONNECTOR
2	1	2052510	CLAMP CABLE, 3/16"
3	4	2223100	5/16-18 NYLOCK, SS
4	2	2227304	BUSHING-HAT 1/2" SHAFT BRONZE
5	8	2263434	#8-18 X 1 SS PPH
6	2	2283410	SCREW, 1/4-20 X 3/4 FLAT
7	3	2303434	SCREW, #8-32 X 5/8 PPMS SS
8	5	2305404	SHRINK TUBE, .374 ID X 1.0"
9	1	2370832	C-CLIP, 3/8 LOW CLEARANCE SS
10	1	2371537	WRAP DRUM SPACER
11	4	2371749	5/16" FLAT WASHER, SS
12	4	2371752	WASHER, 5/16 FENDER
13	2	2371754	#8 WASHER, 1/2 OD, SS
14	5	2371758	3/8 HD FLAT WASHER, SS
15	3	2371765	PULLEY SPACER, SHORT
16	3	2371767	CONTROL BOARD SPACER, T2
17	2	2371780	SPACER, #8 X .125"
18	1	2371909	SENSOR BRACKET, TALON2
19	1	2371957	WATER GUARD, MAIN TALON2
20	1	2371992	WRAP DRUM MOUNT, TALON2
21	1	2372350	TENSIONER BLOCK
22	1	2372660	PIN, PULLEY LONG, TALON2
23	1	2372663	BOTTOM PULLEY PIN, T2
24	1	2372664	TENSIONER-PULLEY-PIN
25	2	2372740	SPRING, GIB TENSION
26	1	2372742	SPRING, PISTON
27	1	2372746	SPRING, TORSION - WRAP DRUM, TALON2
28	3	2372820	SLIDE GIB, LOWER
29	1	2372827	SLIDE GIB, FLOATING .089
30	2	2372930	CORD RETAINER
31	2	2373005	E-RING EXTERNAL SS .500
32	2	2373106	NUT #4-40 NYLOK, SS
33	7	2373138	3/8-24 MYLOK NUT, SS
34	1	2373201	TENSIONER STOP
35	2	2373439	SCREW #4 X 5/8 PPMS SS
36	4	2373481	SCREW #10-32 X 1/2 SEMS PPH SS
37	2	2373485	#6-32 X 1/4" TYPE F PPH SS
38	4	2373525	5/16-18 X 3-1/2 HHCS SS
39	1	2373529	3/8-16 X 1" HHCS SS
40	2	2373815	TALON MOUNTING TRAP, T2
41	1	2373816	TALON STOP BOLT EXTRUSION
42	1	2373820	TALON 2, MOTOR STRAP
43	1	2374169	PCB-ASM, TALON 2
44	1	2375687	DECAL, MINNKOTA FRONT, TALON
45	1	2375739 2375758 2375797 2375759	DECAL, COVER-BEZEL- 12' BLACK DECAL, COVER-BEZEL- 10' BLACK DECAL, COVER-BEZEL - 12' WHITE DECAL, COVER-BEZEL - 10' WHITE
46	1	2375880	DECAL, LARGE TALON LOGO
47	1	2376012	BEARING, WRAP DRUM
48	1	2377814	SEALED MOTOR, TALON 2
49	1	2377906	HUB, WRAP DRUM, ALUMINUM
50	1	2378060 2378061 2378062 2378063 2378065 2378066 2378067 2378068	OUTER COLOR EXTRUSION - 10' CLEAR OUTER COLOR EXTRUSION - 10' BLACK OUTER COLOR EXTRUSION - 10' BLUE OUTER COLOR EXTRUSION - 10' RED OUTER COLOR EXTRUSION - 12' CLEAR OUTER COLOR EXTRUSION - 12' BLACK OUTER COLOR EXTRUSION - 12' BLUE OUTER COLOR EXTRUSION - 12' RED

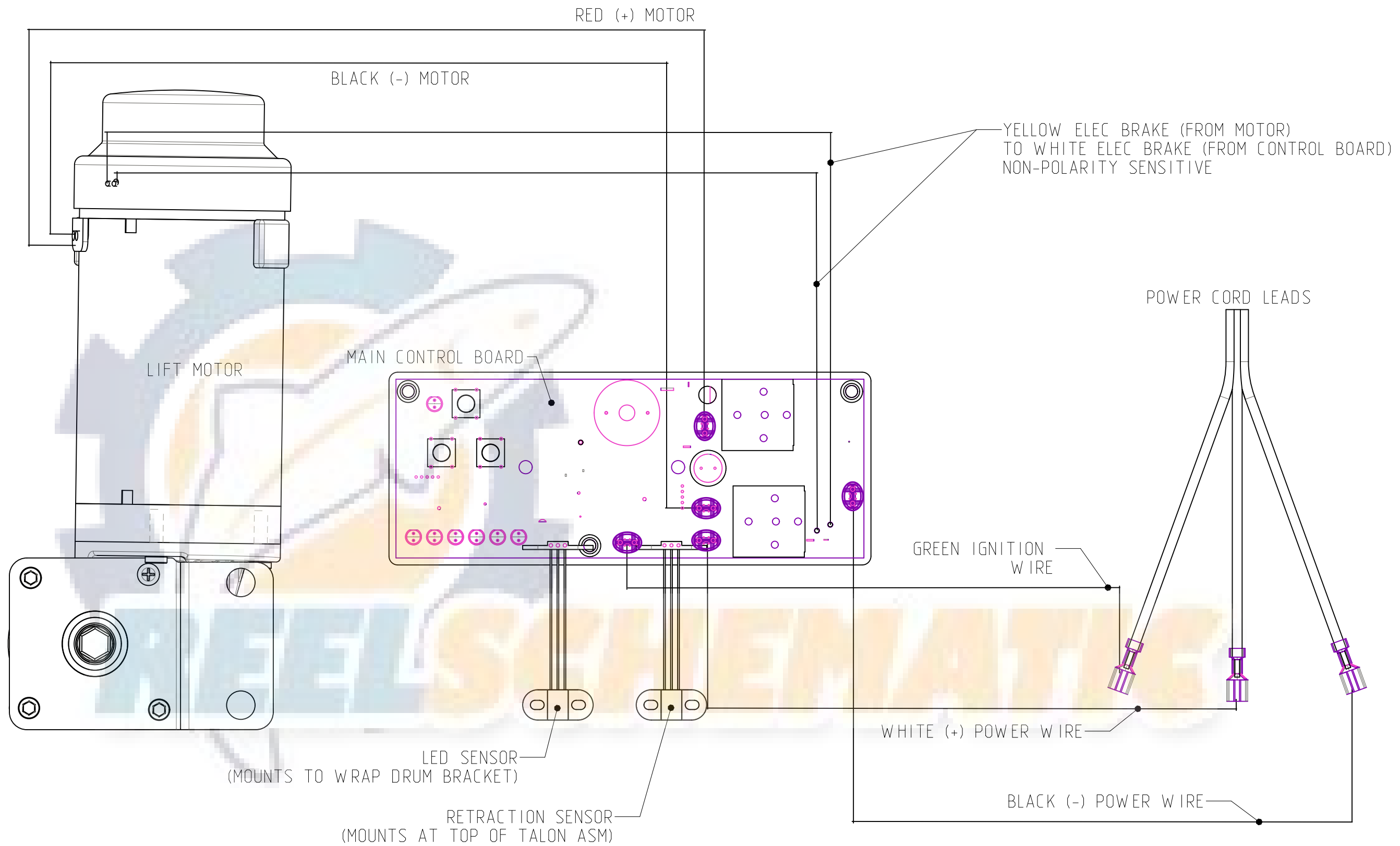
ITEM NUMBER	QUANTITY	PART NUMBER(S)	PART NAME
51	1	2378031	TILT BRACKET, MACHINED, TALON 2
52	1	2378231	RESETTABLE FUSE - 30A
53	2	2378448	.187 X .125 MAGNET
54	1	2378514	POWER CORD, 14AWG, 3 CONDUCTOR
55	4	2378601	POP RIVET, 1/8" SS
56	1	2378809	WATER SHIELD, DEFLECTOR TALON 2
57	1	2378850	WIRE LOOM 3/8"
58	3	2383444	#8-32 X 1-1/4" PPH MACHINE SS
59	2	2383446	#8-16 X 1/2" PLASTITE SCREW SS
60	1	2383451	SCREW, 1/4-20 X 2.75" PPH SS
61	2	2383456	3/8-24 X .75" HHCS SS
62	4	2383457	SCREW #8-16 X 1.5 PLASTITE SS
63	2	2383458	SCREW #8-32 X 1.0 PPH SS
64	4	2373459	3/8-24 X 1.25 HHCS SS
65	6	2383461	SCREW, #8 X .437 SS HI-LO
66	2	2383468	SCREW #4-40 X 5/16 SHCS SS
67	1	2990279	FUSE CAP W DECAL
68	3	2992366	PULLEY W BUSHING, LARGE IDLER
69	1	2997920	WRAP DRUM, MODULAR ASM TALON 2
70	4	3391706	WASHER 3/8 SS
71	1	3392640	PIN, DRIVESHAFT
72	1	9950433	TIE WRAP, 4"
73	1	2370285 2370286	COVER FW TALON 2, BLACK COVER SW TALON 2, WHITE
74	1	2370293 2370294	HOUSING LEFT, TALON 2 BLACK HOUSING LEFT, TALON 2 WHITE
75	1	2370297 2370298	HOUSING RIGHT, TALON 2 BLACK HOUSING RIGHT, TALON 2 WHITE
76	1	2378835 2378836	BEZEL HOUSING, TALON 2 BLACK BEZEL HOUSING, TALON 2 WHITE
77	1	2371883	REMOTE DASH HOLDER
78	1	2370818	LANYARD, REMOTE
79	2	2994044	REMOTE ASSEMBLY



Reference chart
on page 24.

ITEM NUMBER	QUANTITY	PART NUMBER(S)	PART NAME
1	1	2333101	NUT, 10-24 NYLOK 18-8 SS
2	8	2370832	C-CLIP, 3/8 LOW CLEARANCE SS
3	2	2370850	CABLE-KEEPER
4	1	2371981	WIPER, RETAINER
5	1	2372007 2372008	SPIKE, .75 X 48.3", 10' SPIKE, .75" x 56.4", 8/12'
6	4	2372316	SHAFT, IDLER
7	1	2372643	PIN, SPRING 1/8 X 1.0 SS
8	1	2372645	PIN-DOWEL 3/16" X 1.5 SS TALON 2
9	2	2372653	PIN KNURLED 1/8"
10	1	2372654	PIN, SPRING 1/8 X 1-1/4 SS
11	1	2372659	PIN DOWEL 3/16 X 2.5 SS TALON 2
12	1	2372668	3RD STAGE SUPPORT PIN
13	1	2372669	3RD STAGE SUPPORT DOWEL
14	5	2372740	SPRING, GIB TENSION
15	2	2372742	SPRING, PISTON
16	1	2372743	SPRING, .36 X .5
17	1	2372748	SPRING-LATCH-3RD
18	1	2372820	SLIDE GIB, LOWER
19	4	2372821	SLIDE GIB, UPPER
20	5	2372827	SLIDE GIB, FLOATING .089
21	8	2373489	SCREW, #10-24 X .500 MACHINE
22	1	2373532	SHOULDER SCREW, 1/4 X 5/16 SS
23	1	2374618	WIPER, 2ND STAGE
24	1	2374632	O-RING, 3/4" ID X .125
25	1	2375416	INSULATOR, 1/4" STOP PIN
26	1	2375418	2ND STAGE INSULATOR, 1/4" STOP PIN TALON 2
27	1	2376440	SHIELD-DEBRIS, 2ND STAGE
28	1	2376441	DEBRIS-SHIELD-2ND STAGE WIPER
29	1	2377201	3RD STAGE LATCH
30	1	2377205	LATCH SECOND STAGE
31	1	2377220	CLIP-3RD STAGE
32	1	2377500 2377501	CABLE ASSY, 2 MM, EXTEND 12" CABLE ASSY, 2MM, EXTEND 10'
33	1	2377502	CABLE ASSY, 2 MM RETRACT 10/12
34	1	2378027	3RD STAGE, MACHINED 10/12
35	1	2378029	2ND STAGE, MACHINED 10/12
36	31	2378601	POP RIVET, 1/8" SS
37	1	2378825	ISOLATOR, SPIKE
38	1	2378824	DEBRIS-CHANNEL
39	2	2383461	SCREW, #8 X .437 SS HI-LO
40	1	2383464	SETSCREW M4-.07 X .70" SS
41	10	2383468	SHCS 4-40 X 5/16 SS
42	1	2991509	PISTON W/ MAGNETS ASM
43	4	2992365	SM IDLER PULLEY W BUSHING

PART NO.
2374968



A		35513		RELEASE FOR PRODUCTION		GPB	3.25.14	JOHNSON OUTDOORS MARINE ELECTRONICS, INC.	
REV.	ECN NO.	DESCRIPTION				BY	DATE	PART NAME: WIRING DIAGRAM - TALON 2	
TOLERANCES: UNLESS OTHERWISE SPECIFIED		CONFIDENTIAL PROPERTY- This document is the confidential property of Johnson Outdoors and is loaned subject to return upon demand; title to same is never sold/transferred for any reason. This document is to be used only pursuant to written instructions of Johnson Outdoors. All rights to designs and inventions are reserved by Johnson Outdoors. Possession of this document is accepted subject to the foregoing.				THIRD ANGLE PROJECTION	DRAWN BY:	DATE:	PART NO: 2374968
.XXXX ±.0010	.X ±.015	RoHS2 AND REACH COMPLIANCE: Supplier certifies that this part complies with 2011/65/EU (EU RoHS2) and (EC) No 1907/2006 (EU REACH). Upon request, supplier will furnish verification of compliance via: JOI form; supplier declaration or analytical testing referencing JOI part number.				QUALITY REQUIREMENTS: Circled dimensions are critical. Dimensions marked * require Proof of Quality with each shipment.	SCALE:	0.3:1	U/M: IN.
.XXX ±.005	FRACTIONAL ±1/64						MATERIAL:		SHEET 1 OF 1
.XX ±.010	ANGULAR ±0°30'						LIFECYCLE STATUS:	Concept	REV: 1